

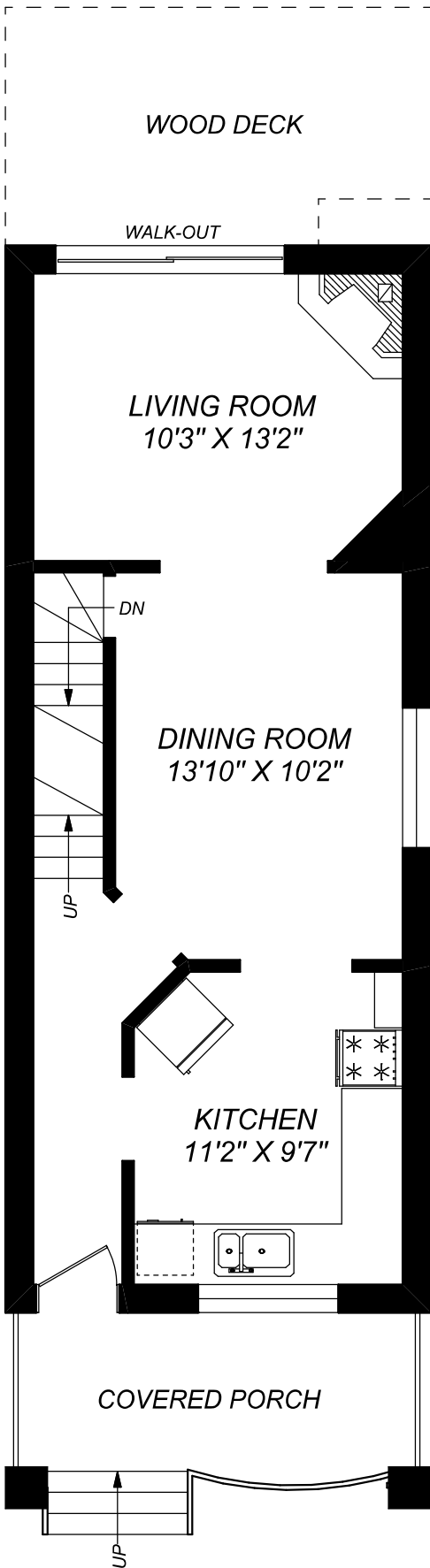
35 GIFFORD STREET



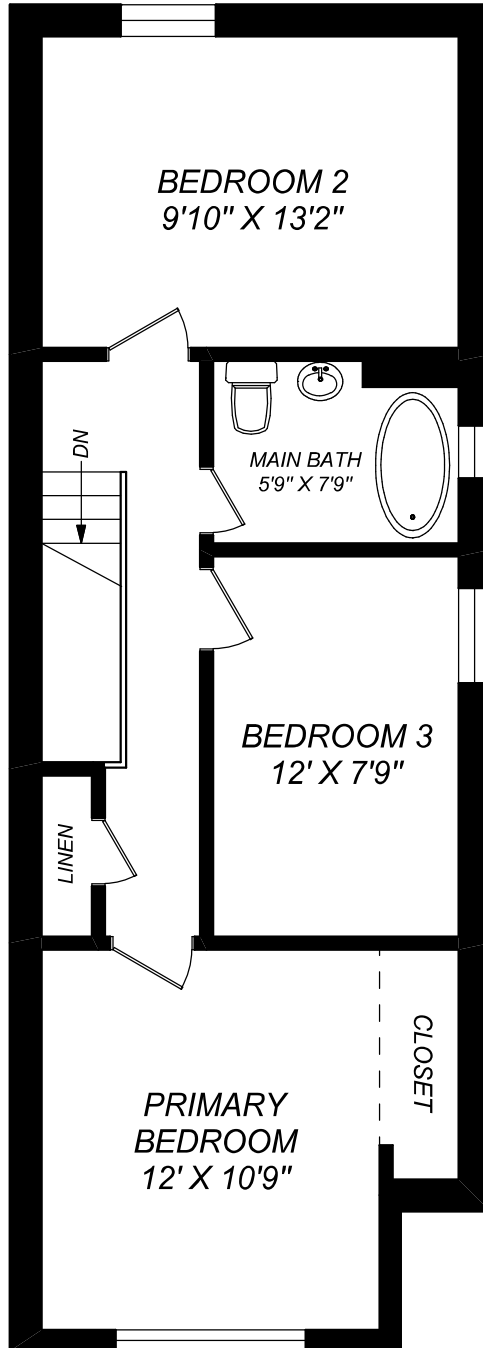
416 573 2096

E & O.E.

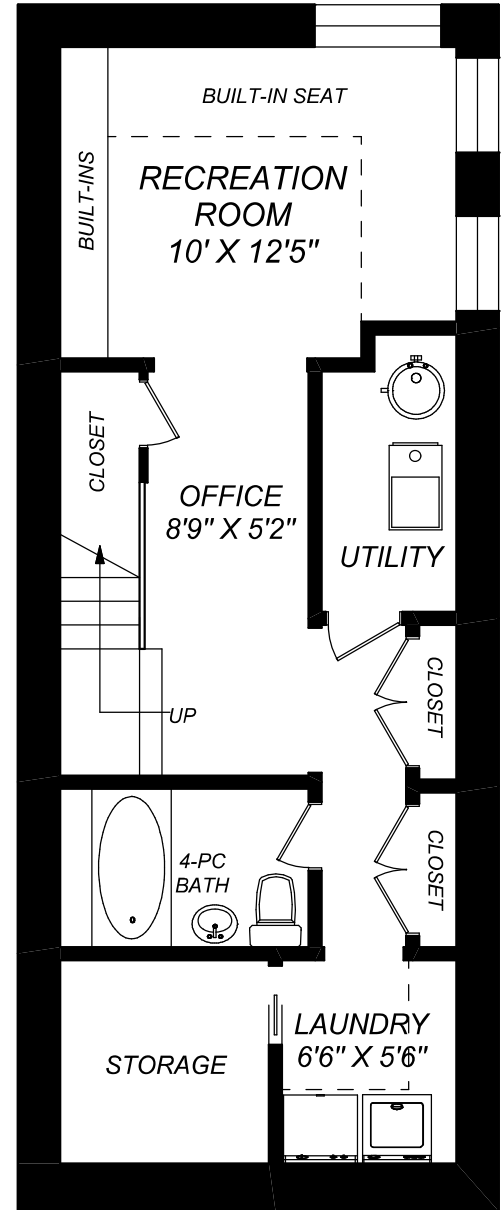
Floor plan may not be 100% accurate.



MAIN FLOOR
578 SQUARE FEET
CEILING HEIGHT : 8'-4"



SECOND FLOOR
633 SQUARE FEET
CEILING HEIGHT : 8'-0"



LOWER LEVEL
578 SQUARE FEET
CEILING HEIGHT : 7'-4"